

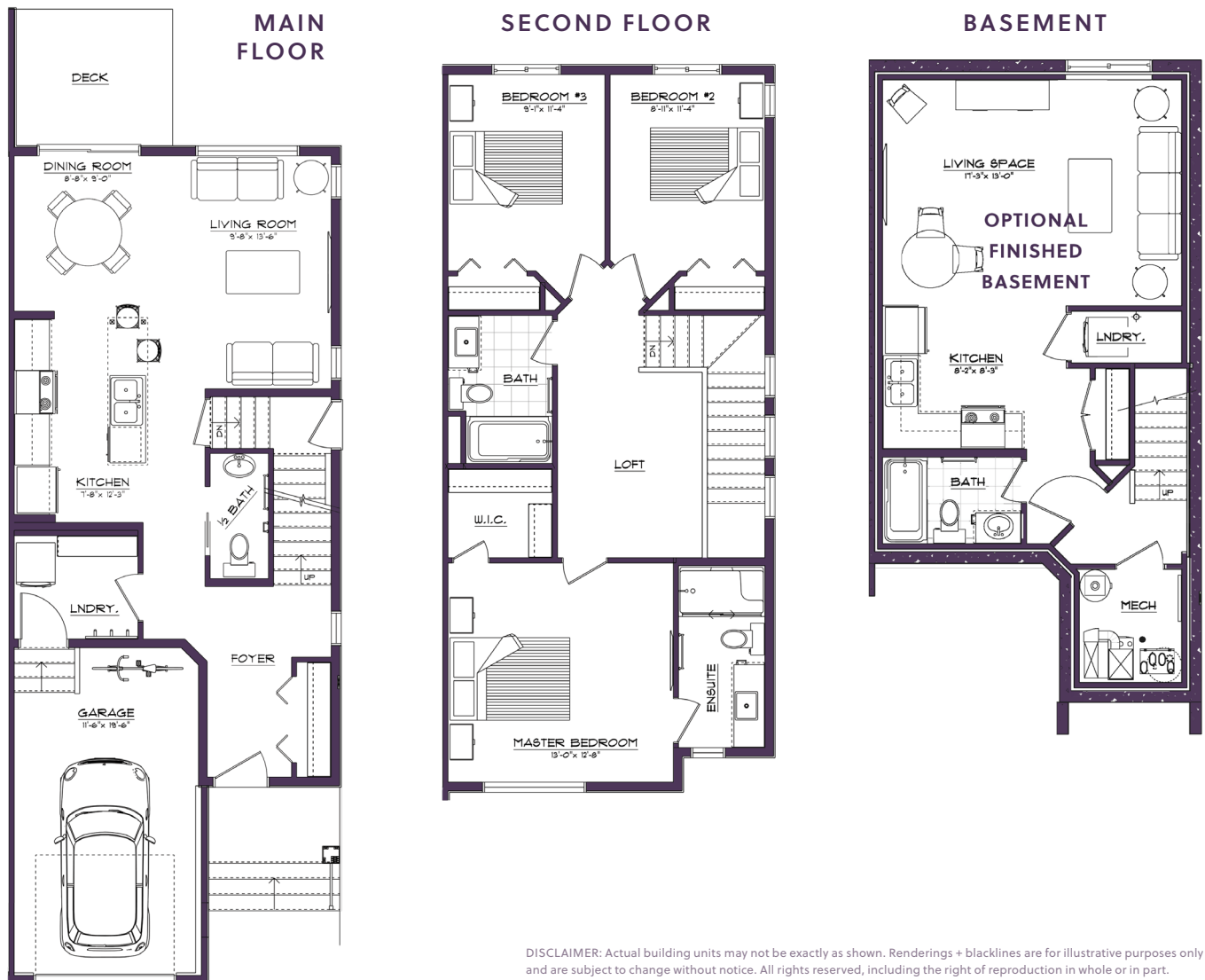
# Solstice

1,359 SQFT • 3 Bedrooms • 2.5 Bathrooms

THE  
RISE  
at Mattson

## Key Features

- Single-car Garage
- Coastal Contemporary Exterior
- Side Entry for a Future Legal Suite
- Open and Inviting Front Foyer
- Entertainer's Kitchen with an Island and Eating Bar
- Laundry Located in the Mud Room
- Spacious Loft Upstairs for Relaxing
- 3-piece Primary Ensuite + Walk-in Closet



DISCLAIMER: Actual building units may not be exactly as shown. Renderings + blacklines are for illustrative purposes only and are subject to change without notice. All rights reserved, including the right of reproduction in whole or in part.

# Equinox

1,630 SQFT • 3 Bedrooms • 2.5 Bathrooms

THE  
RISE  
at Mattson

## Key Features

- Double-car Garage
- Coastal Contemporary Exterior
- Side Entry for a Future Legal Suite
- Galley-style Kitchen with a Large Eating Bar
- Generous Dining Nook
- Laundry Located in the Mud Room
- Spacious Loft Upstairs with an Extended Nook
- 4-piece Primary Ensuite + Walk-in Closet



DISCLAIMER: Actual building units may not be exactly as shown. Renderings + blacklines are for illustrative purposes only and are subject to change without notice. All rights reserved, including the right of reproduction in whole or in part.

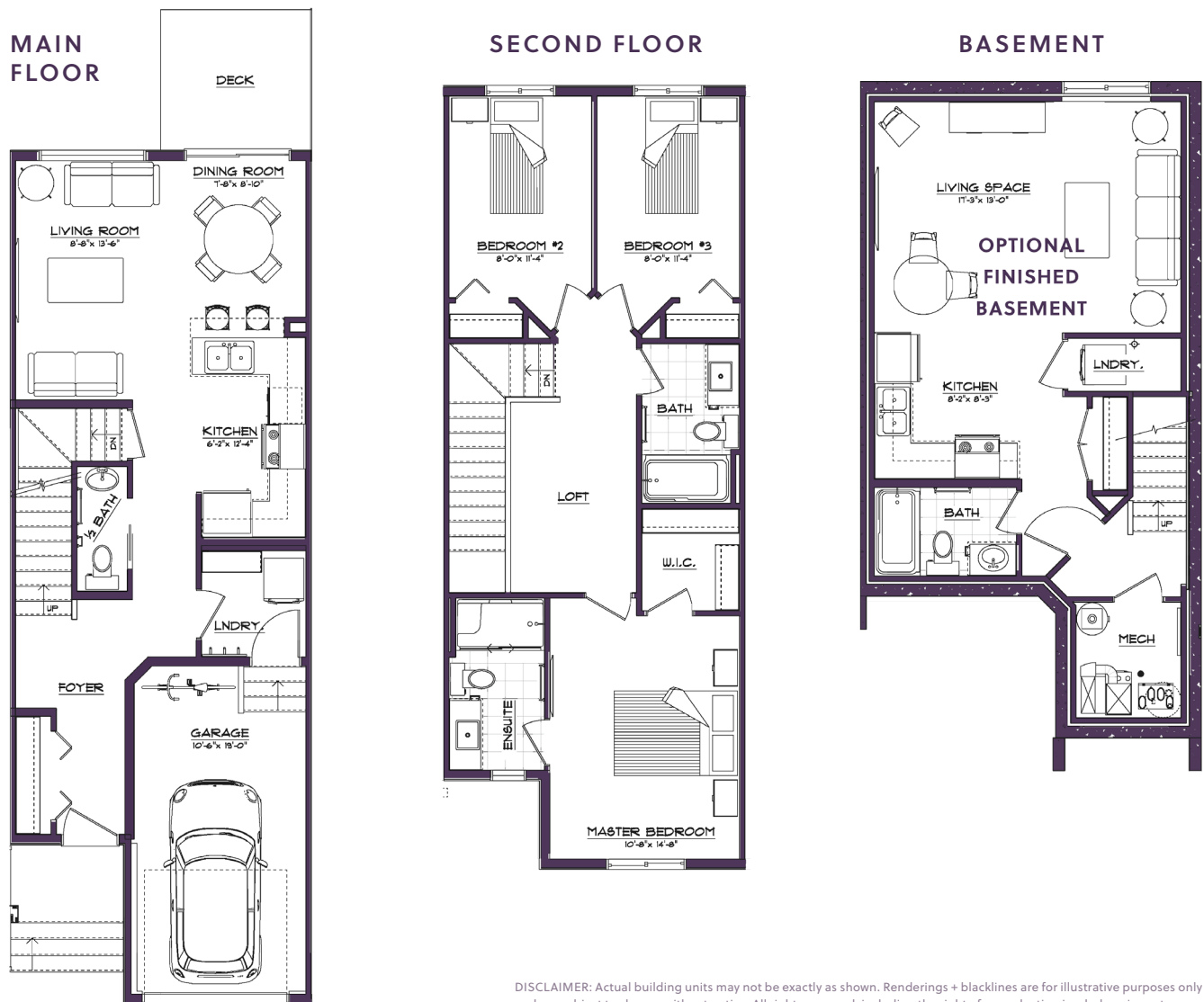
# Nova

1,232 SQFT • 3 Bedrooms • 2.5 Bathrooms

THE  
RISE  
at Mattson

## Key Features

- Single-car Garage
- Coastal Contemporary Exterior
- Open and Inviting Front Foyer
- Spacious Kitchen with a Flush Eating Bar
- Generous Dining Nook
- Laundry Located in the Mud Room
- Cozy Loft Upstairs for Relaxing
- 3-piece Primary Ensuite + Walk-in Closet



DISCLAIMER: Actual building units may not be exactly as shown. Renderings + blacklines are for illustrative purposes only and are subject to change without notice. All rights reserved, including the right of reproduction in whole or in part.